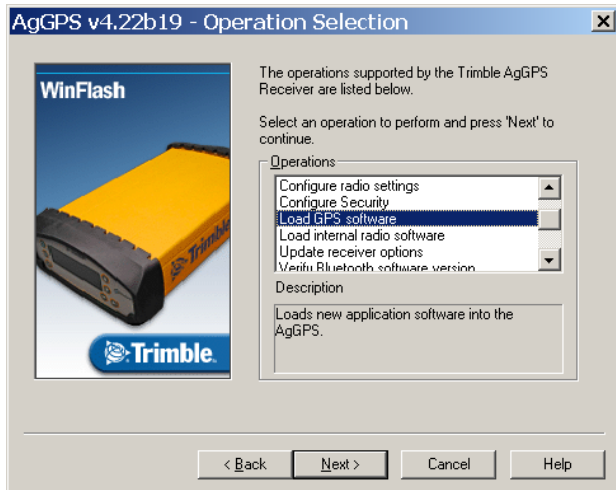




27 May 2011

WinFlash Utility Version 1.212: Device Configuration

1. Write down your base position latitude and longitude, and the point height.
2. Upgrade the firmware as follows:



This document is for informational purposes only and is not a legally binding agreement or offer. Trimble makes no warranties and assumes no obligations or liabilities hereunder.

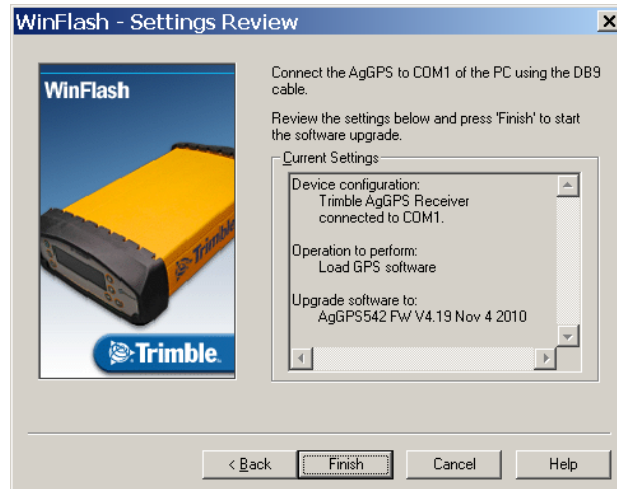
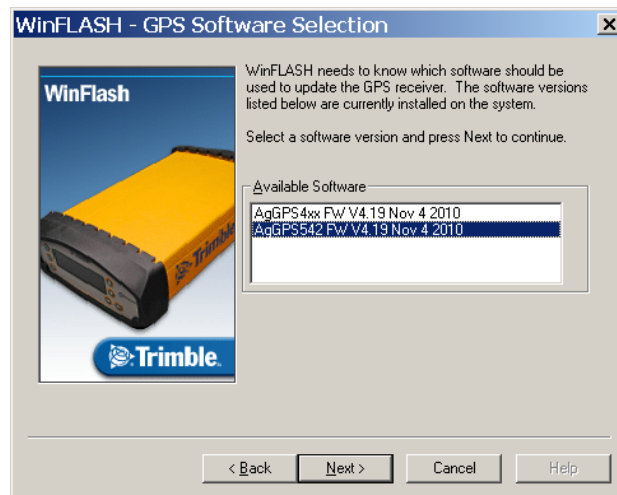
Trimble Navigation Limited, Agriculture Division, 10355 Westmoor Drive, Suite #100, Westminster, CO 80021, USA

© 2011, Trimble Navigation Limited. All rights reserved. Trimble, the Globe & Triangle logo, and AgGPS are trademarks of Trimble Navigation Limited, registered in the United States and in other countries. CMR+ is a trademark of Trimble Navigation Limited. All other trademarks are the property of their respective owners.



3. Select the appropriate software for your device:

For this receiver...	Select...
AgGPS [®] 442 AgGPS 432 AgGPS 900 base AgGPS 450 base	AgGPS 4xx FW V4.19
AgGPS 542	AgGPS 542 FW V4.19



4. If the device is being used as a base, after upgrading, the latitude/longitude/point height position may reset back to *0N/0E/0* and the Radio output may reset to *None*. Do the following:
- Reset the base position: Enter the latitude/longitude/point height information recorded in [Step 1](#).
 - Change *Port Setting* to *Radio*.
 - Change *Format* to *RTK CMR+™*.